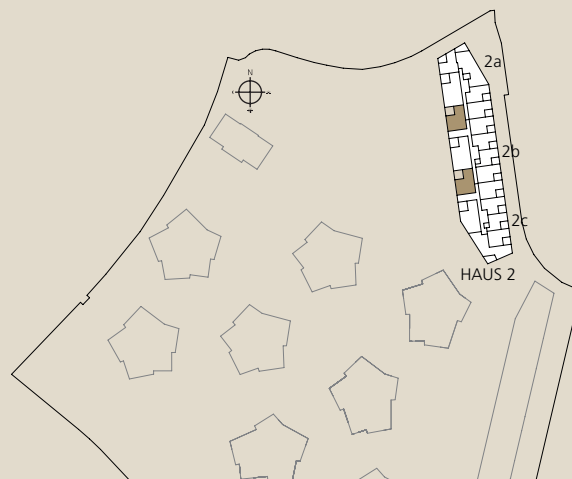
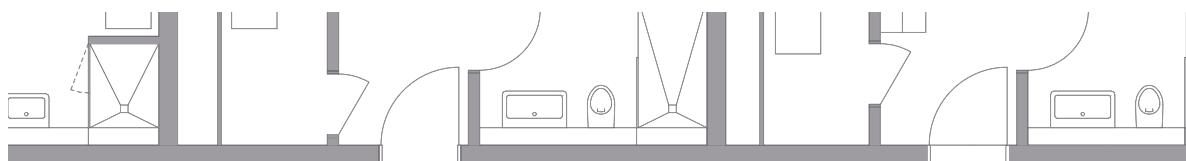
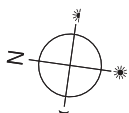


2½-zimmer-wohnungen

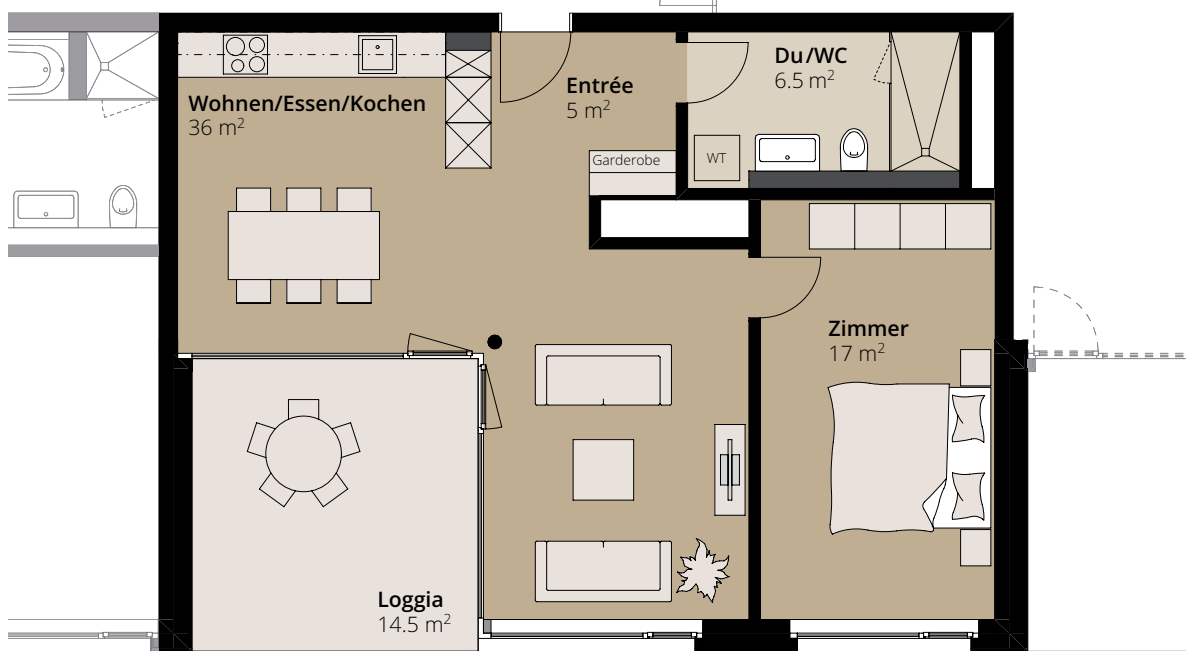
HAUS 2a	2a-103	1. Obergeschoss
	2a-203	2. Obergeschoss
HAUS 2b	2b-103	1. Obergeschoss
	2b-203	2. Obergeschoss



Wohnfläche **66.0 m²**
 Loggia 1. + 2.OG **14.5 m²**



Treppenhaus



Masstab 1:100 (1cm = 1m)